



## McFarland High School Construction Update!

Over the past two weeks, the McFarland High School project has seen major steps towards completion. The pool deck has been entirely poured! With this poured, joist and deck painting and MEP work can begin in the area. Underneath the mezzanine, masonry walls are complete creating the changing area, pool entrance, and Pool Directors office. In the lobby, MEP rough-ins, bar joists, and steel studs are ongoing. Steel work is ongoing in the PAC as catwalks are being installed above the stage. The mud-slab, and access ramp in the PAC have also been poured. The mud-slab will be used by many trades that need to complete overhead work in the PAC. Behind the stage, masonry work is ongoing as the walls for the dressing room and green room are nearing completion. In the Multi-Purpose room, the block walls are complete and have been topped out with steel studs.

### Pool Addition Upcoming Work

- Joist and deck painting
- Mezzanine stair pour
- Mechanical/Storage roof install

### PAC Addition Upcoming Work

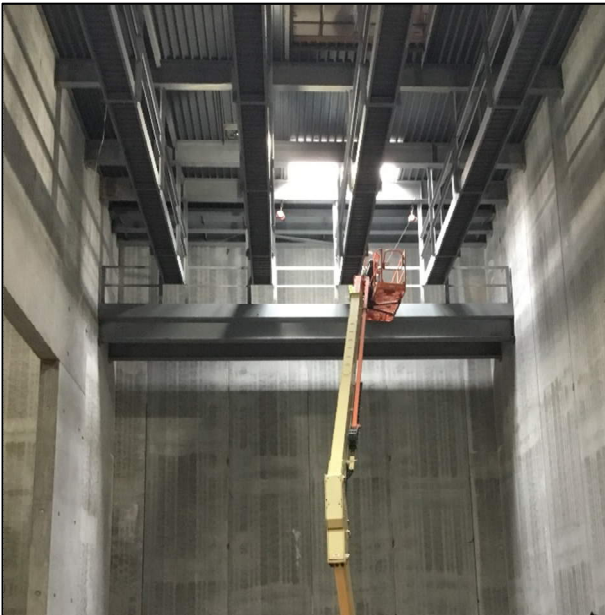
- Masonry cheek walls
- Continued catwalk install
- Pan-steel stair concrete pour

### Multipurpose Room Upcoming Work

- MEP rough-ins
- Railing and stair install



Due to limited access in the Pool, a conveyor was used to pour the final segment of concrete. This conveyor spanned just over 100 feet!



The four new catwalks will serve as access to the lighting and rigging above the stage.



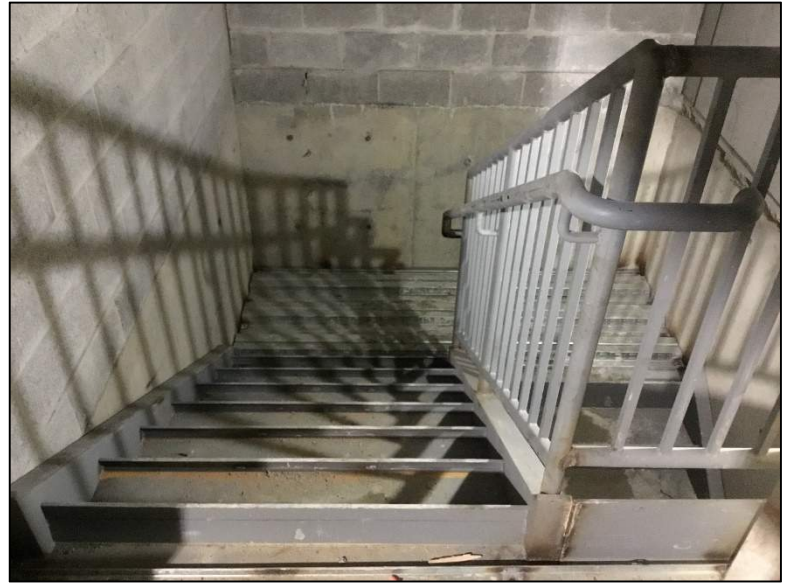
The vestibule overhang steel structure is complete. This overhang will be finished with metal coping around the edge, and slotted metal panels underneath.



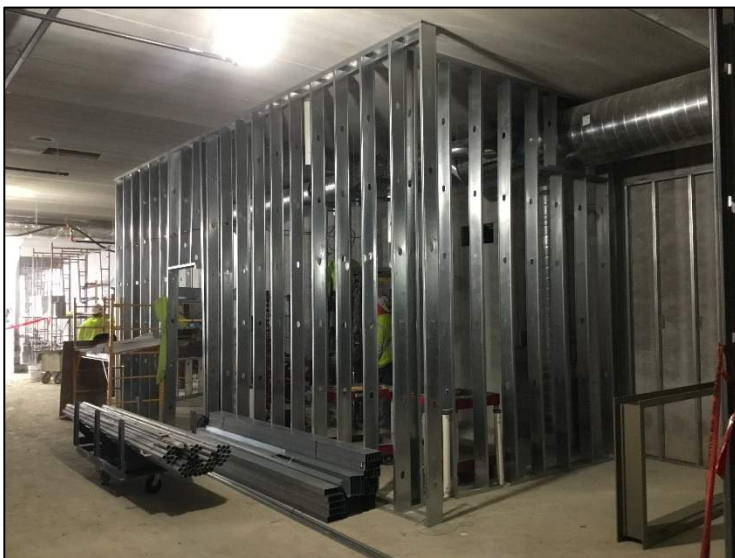
**Did you know?** All exposed steel in the pool goes through the process of galvanization. The process includes lowering the metal into a vat of molten Zinc. The Zinc then attaches to the metal creating a protective coating.



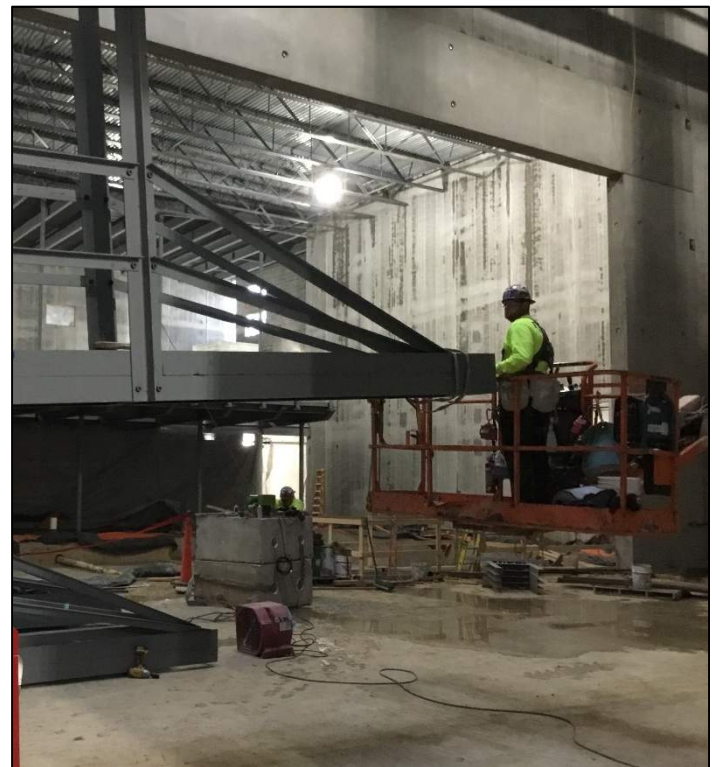
The masons are preparing to build the PAC cheek walls. After these walls are built, the side circulation concrete can be poured.



Both the north and south orchestra pit access stairs are installed. These metal pan stairs will have concrete poured into the stair treads, and on the landing decks to create the walking surface.



Steel stud framing has moved into the lobby area. Above is the frame-out for the new office and storage room.



Ironworkers are using a pulley system to lift the catwalks up into the air. As it is lifted, Ironworkers steady the beam with a tag line so it does not swing around.